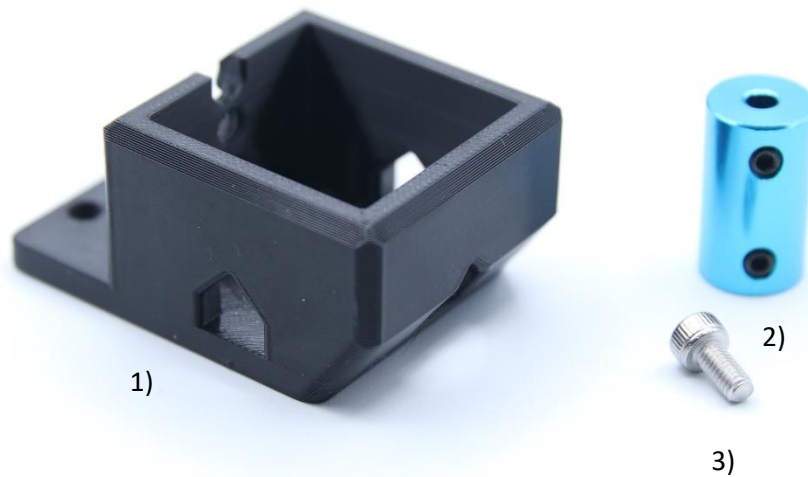


**Mounting instructions for ZWO EAF motor focus on 2" rack and pinion
focusers**



Scope of delivery:



- 1) Adapter
- 2) Shaft adapter
- 3) 1x M4x8 Screw

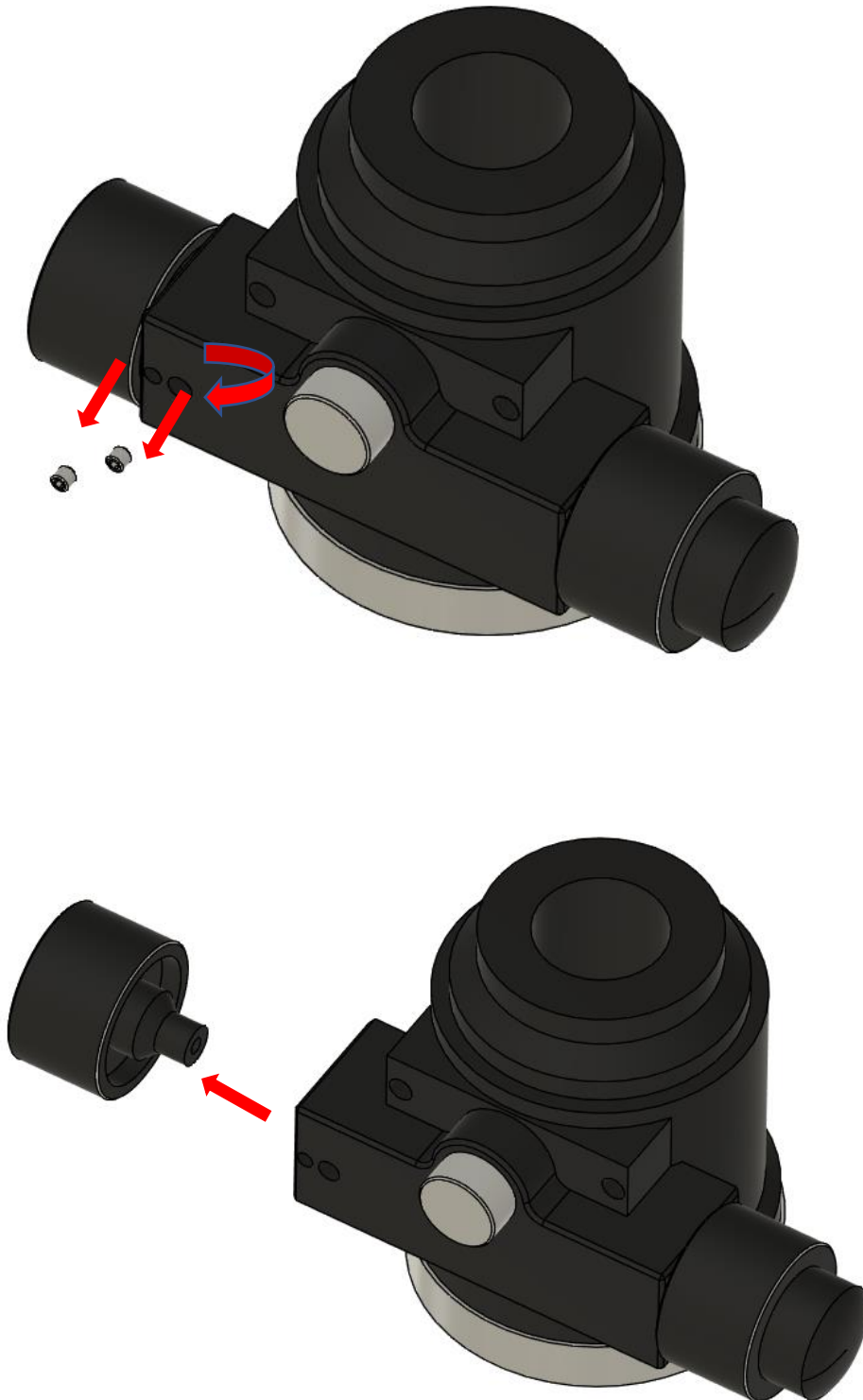
Mounting accessories are not included in the scope of delivery (Allen key size 2 and 3)

Please always bear this in mind with 3D printed parts! After tight comes off! Tighten the parts carefully so that a firm resistance can be felt. Do not go beyond this.

To order spare parts, please let us know the color dot on the packaging and the part number shown above. Without this information, we will unfortunately not be able to offer you suitable spare parts for your set.

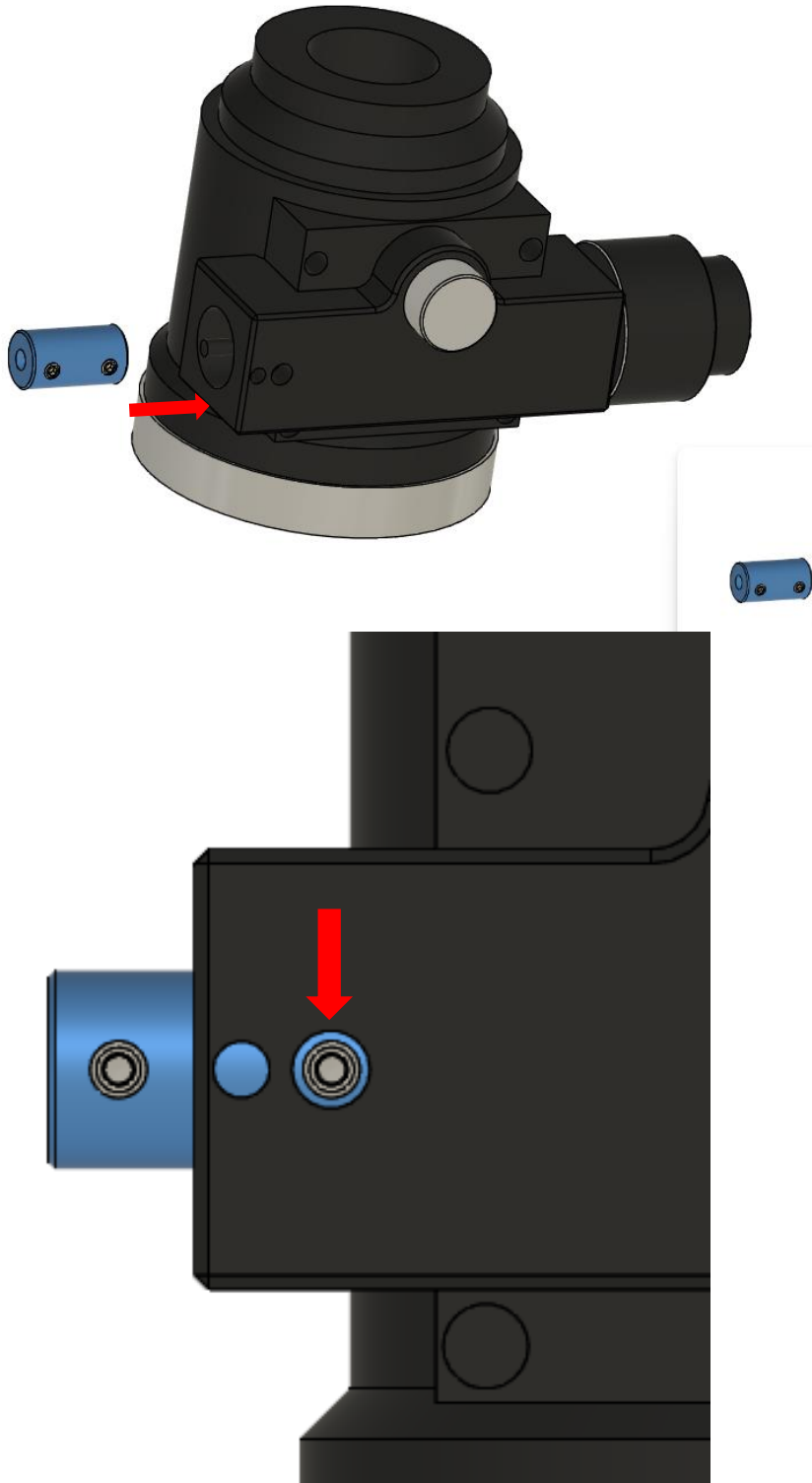
Work step 1:

Loosen the two screws on the left side of the focus wheel on your existing 2" R&P focuser and then remove it.



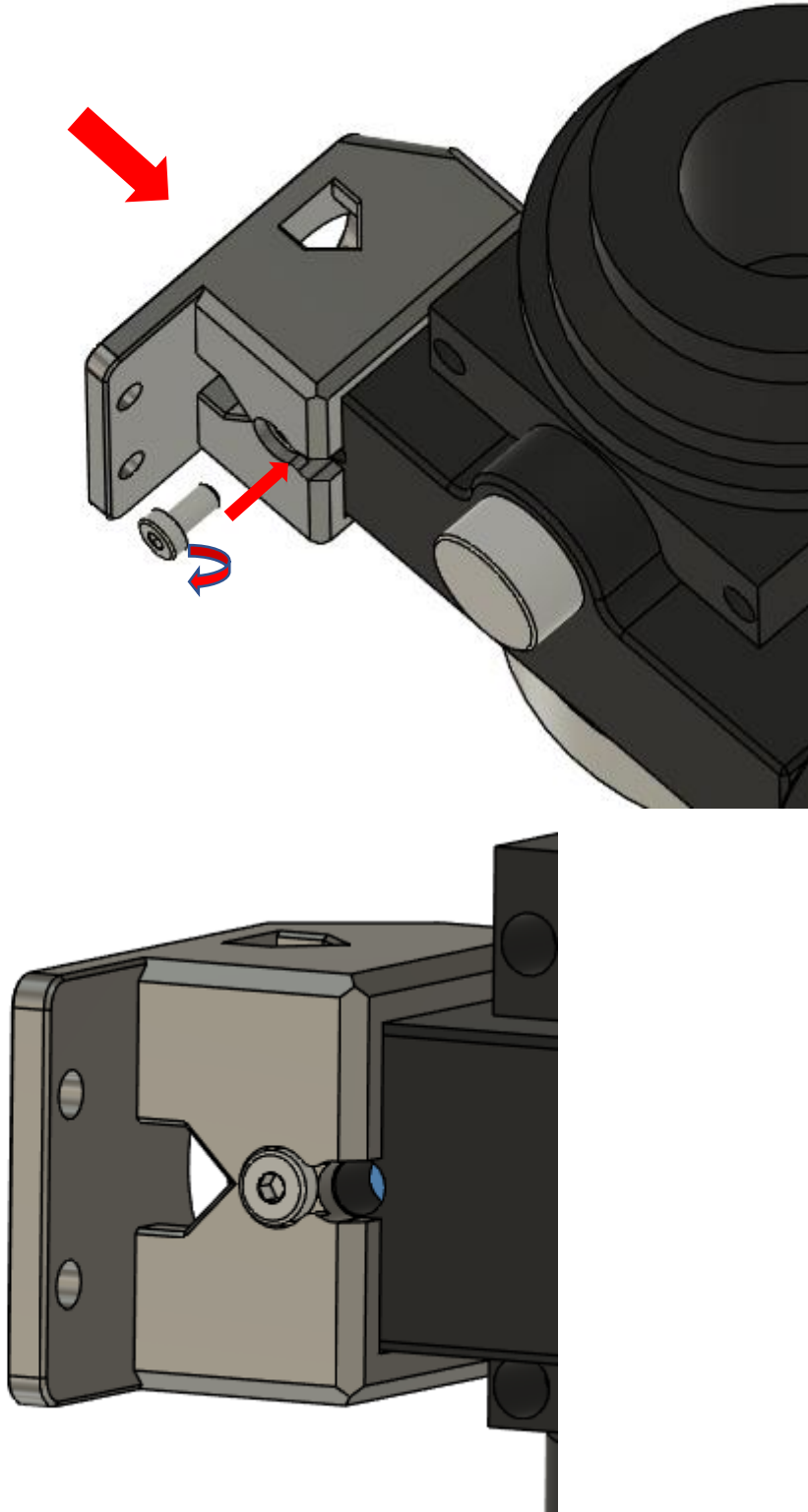
Work step 2:

Now slide the shaft adapter (2) with the large opening (5mm) over the exposed shaft of the focuser as far as possible. Ensure that the shaft is in the correct position so that it can be screwed tightly to the focuser (see illustration).



Work step 3:

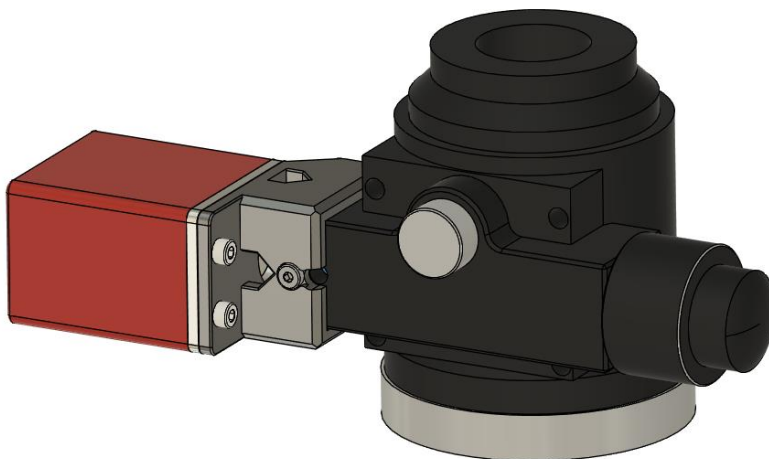
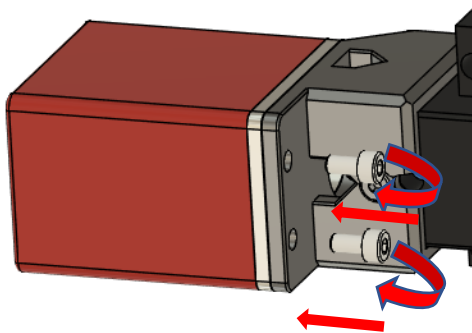
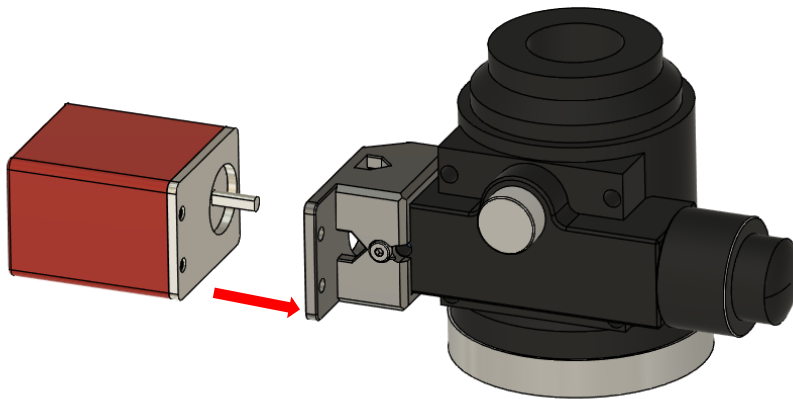
Then slide the adapter (1) over the shaft adapter on the focuser and screw it tightly to the focuser using the enclosed M4x8mm screw (3).



Work step 4:

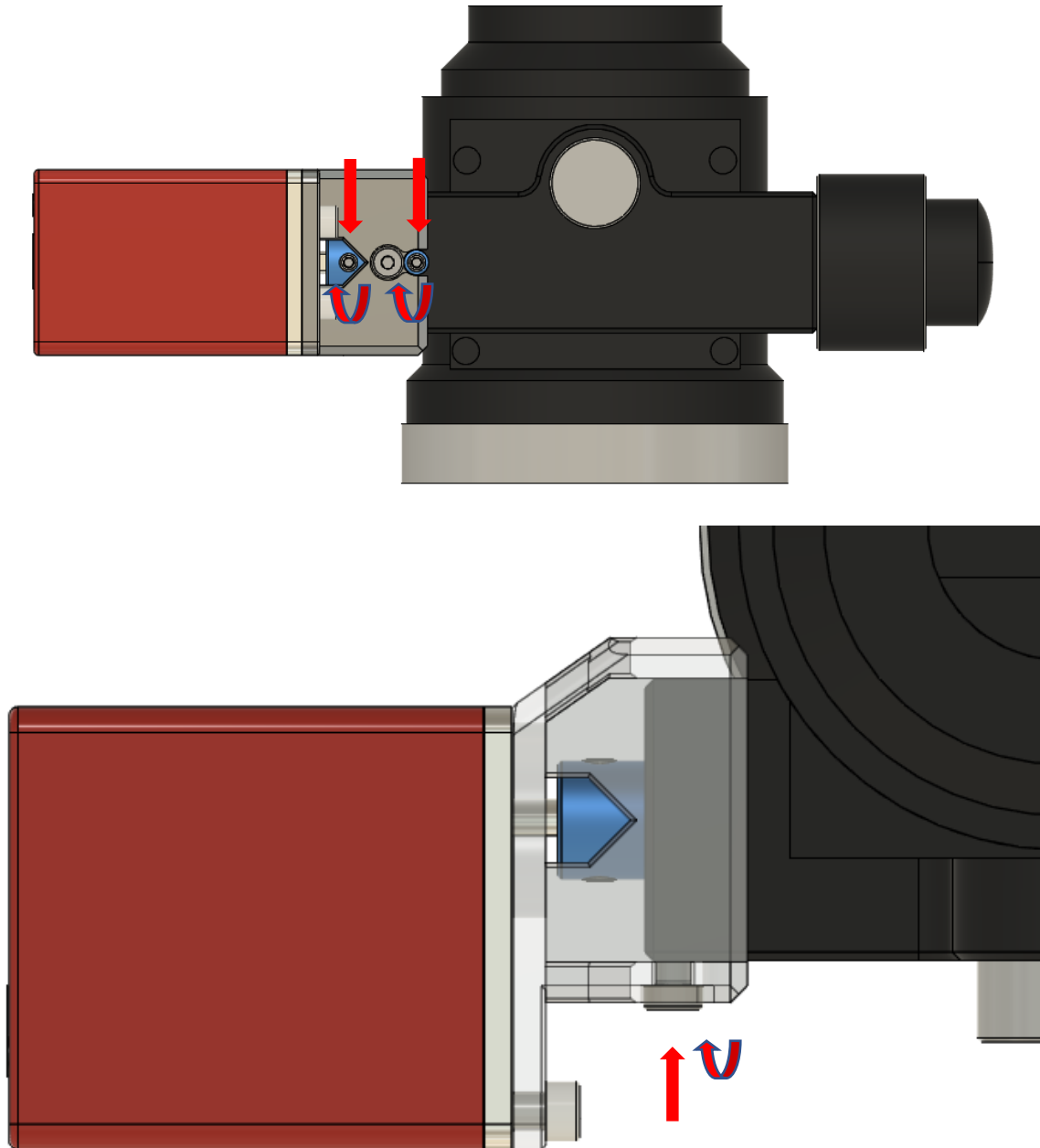
Then screw your existing ZWO EAF motor and the adapter (1) together using the two M4x10mm screws supplied with the ZWO EAF.

Make sure that the screws on the shaft adapter on the EAF side are fully open, otherwise the shaft of the EAF motor cannot be pushed in far enough and the distances for fixing the adapter to the pull-out may not fit!



Work step: 5

Now screw the ZWO EAF to the shaft adapter (2) and tighten the two screws on the shaft adapter (2).



Congratulations! The installation is now complete.