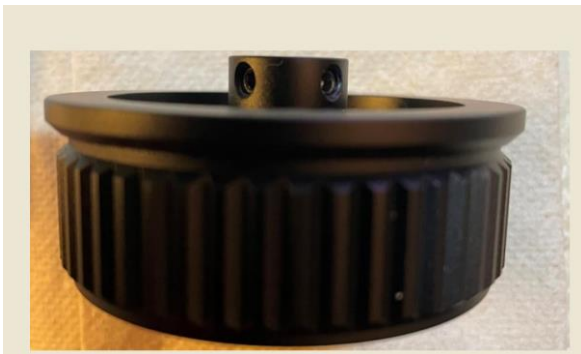


Installation of the EAF to Photoline telescopes:

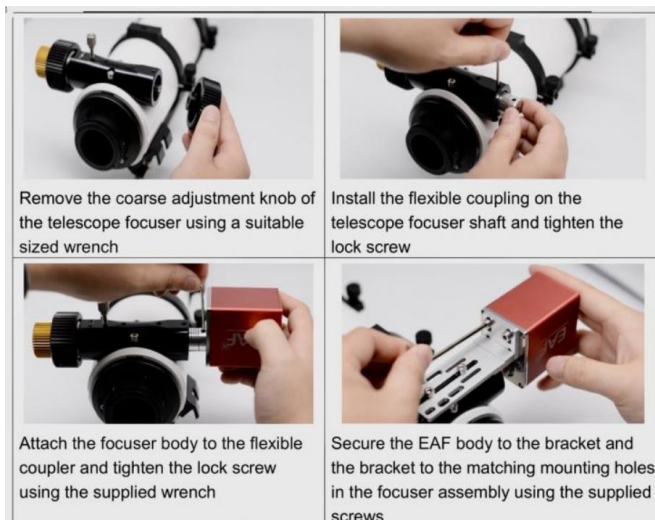
1. Remove the knob, by loosen (not removing!) the screws inside of the focuser body. There are 2 screws. You have access through this hole (see image). My rotating the focuser knob you can spot the screws



2. This is how it looks like, when removed.



3. Now follow these steps:



Note: You can use any thread which the focuser have to attach the L-bracket of the EAF. Don't forget to remove the focuslockscrew, you don't need it anymore when the autofocuser is attached.