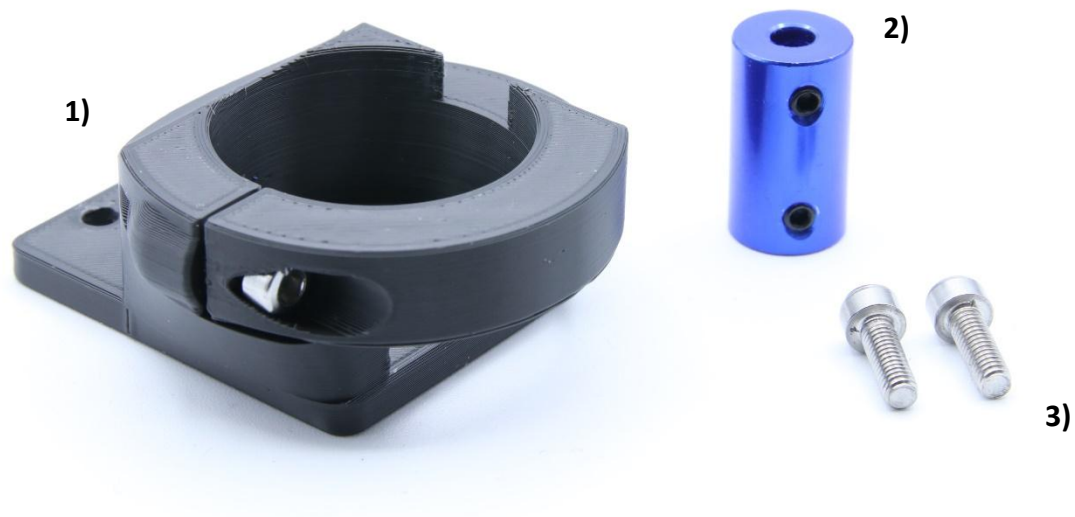


Mounting kit for Touptek AAF motor focus on UCN2-G2 and TSRPN2 focusers



Scope of delivery:



1) AAF motor bracket

2) Shaft coupling

3) 2x M4x12 Allen screws

Mounting accessories are not included in the scope of delivery (Allen key size 2 and 3)

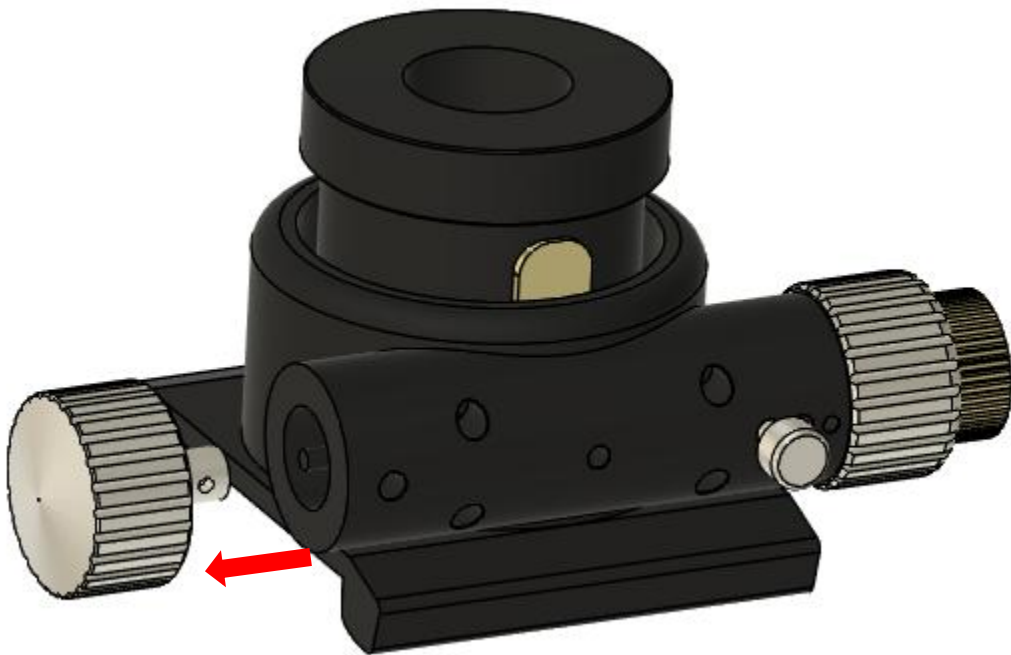
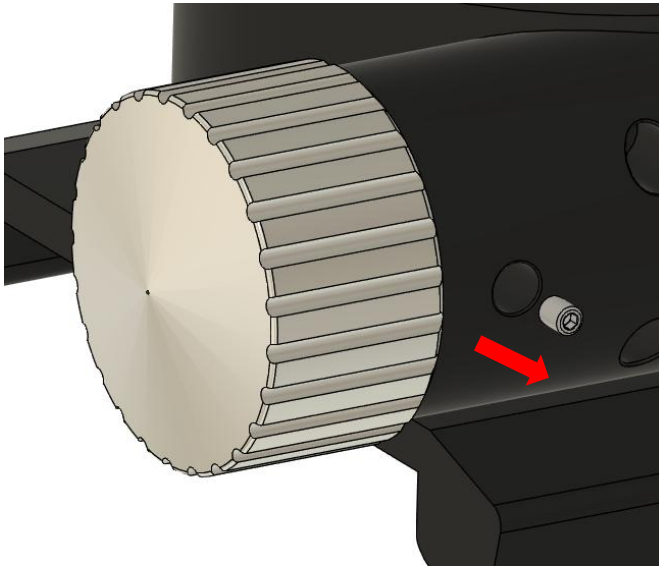
Please always bear in mind with 3D printed parts! After tight comes off!

Tighten the parts carefully so that a firm resistance can be felt.

is felt. Do not go beyond this.

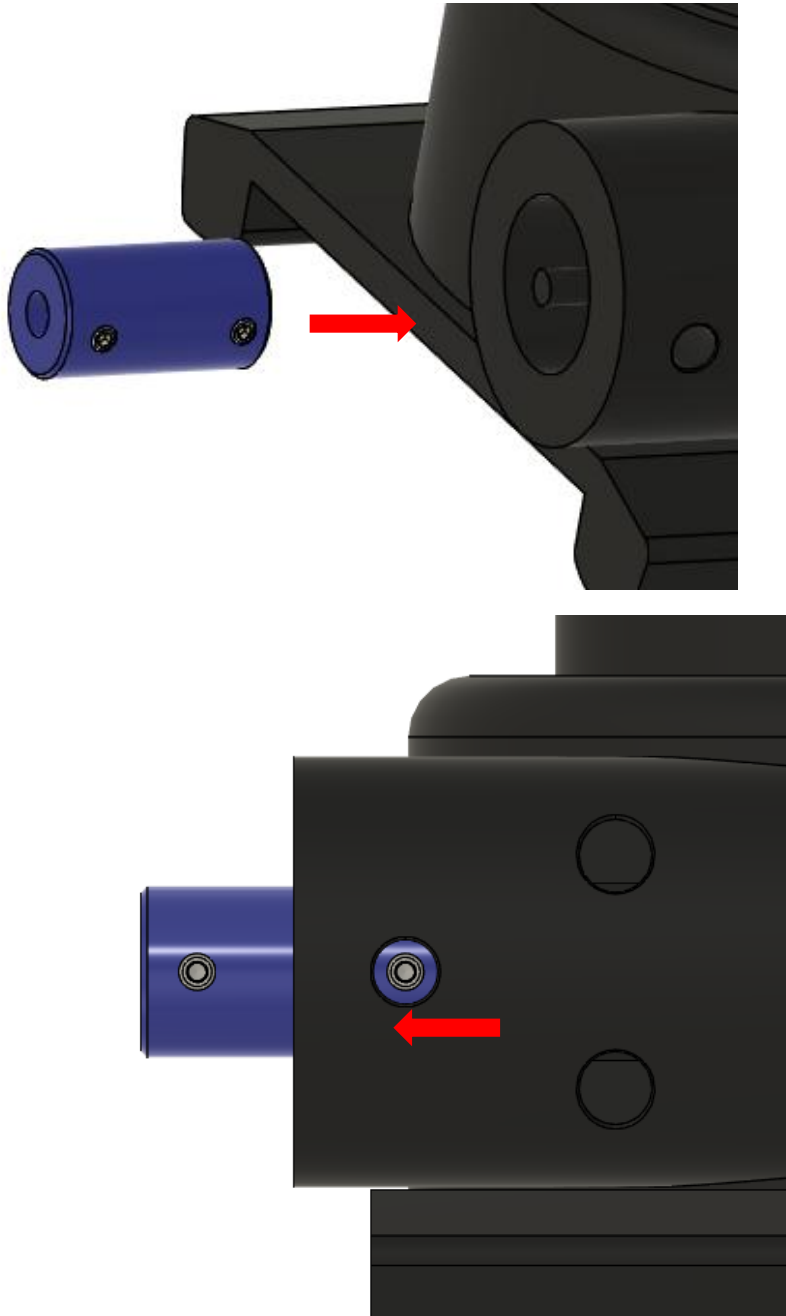
Work step 1:

Remove the small Allen screw from your focuser and then remove the focussing wheel.



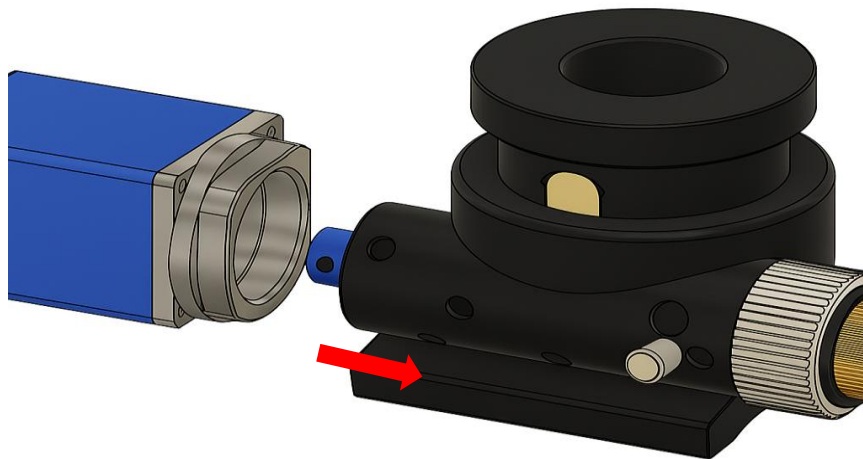
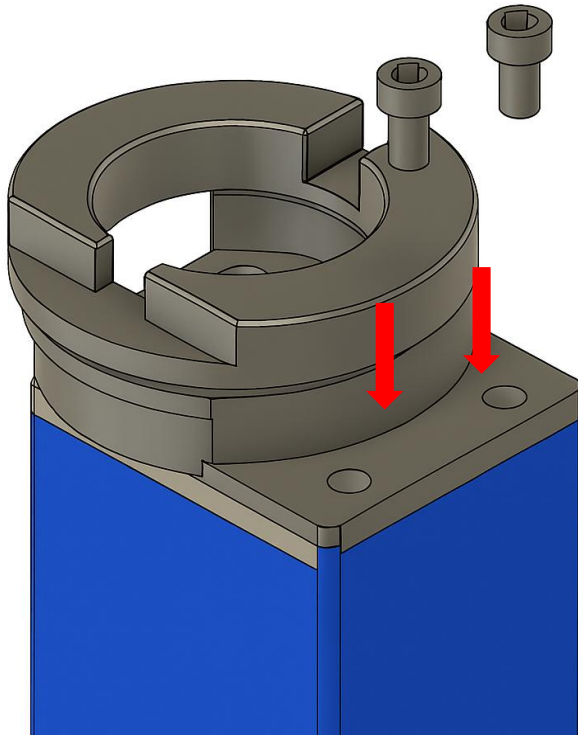
Work step 2:

Now slide the shaft coupling (2) with the small opening onto the shaft of the focuser up to the opening of the removed screw in the focuser. Then push the coupling so far to the left that you can still tighten the screw. Now turn the axis of the remaining right-hand focus wheel by 180 degrees so that you can also tighten the second screw.



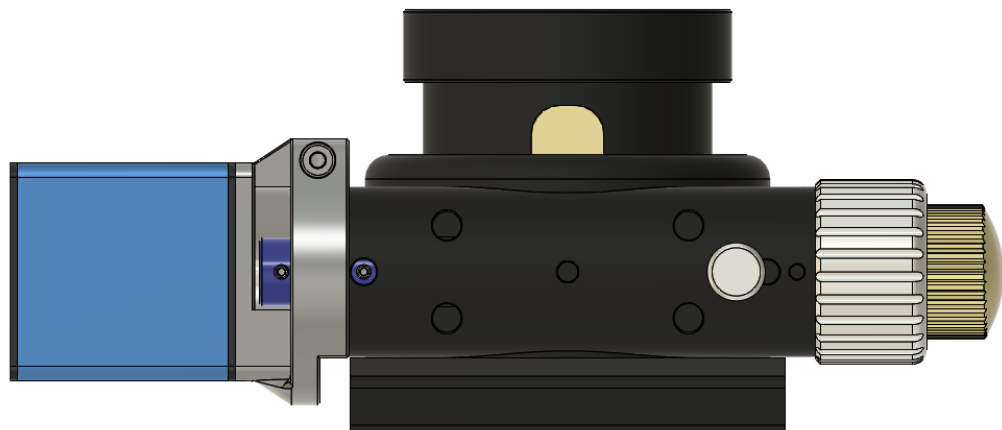
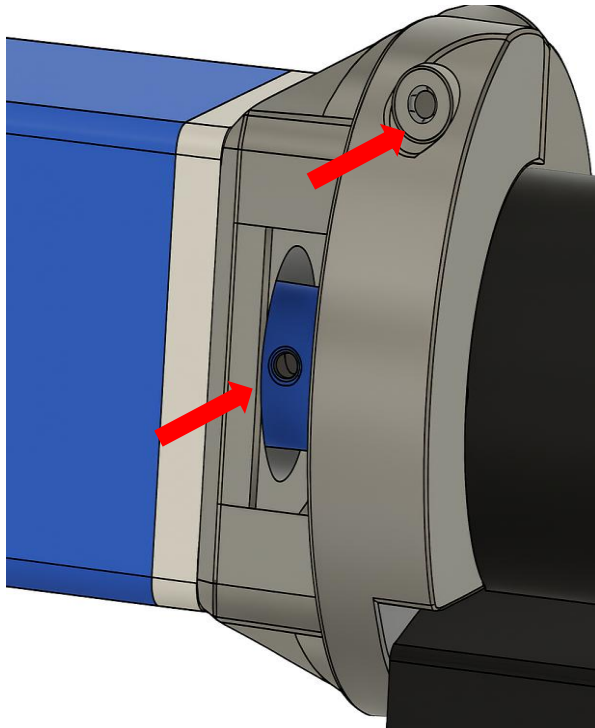
Work step 3:

Screw the AAF motor to the motor bracket (1) and the two M4x12 screws (3). Then slide the screwed motor bracket to the shaft coupling (2).



Work step 4:

Screw the shaft coupling (2) to the shaft of the focuser and the motor mount. Finally, screw the motor mount to the focuser. Then switch on the AAF and rotate it 180 degrees to tighten the second Allen screw of the shaft coupling.



The result should now look as shown in the picture.

The adaptation is now complete.