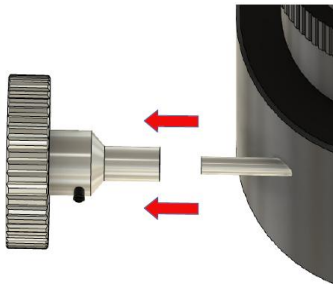


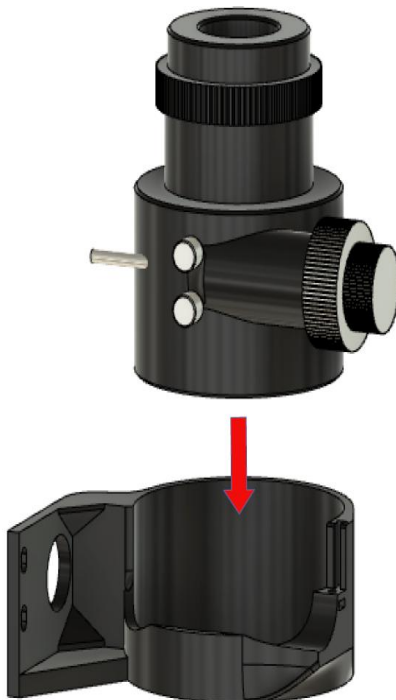
## Installation instructions for adapting the AAF-FOCN2ehen.



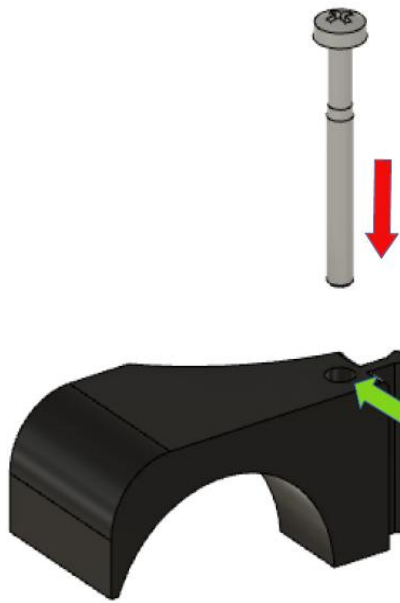
First remove the left grub screw on the focuser.



Now remove the left wheel from the shaft.



Place the AAF adapter on the table and slide or press the focuser into the adapter from above as shown.



Now use the enclosed 3x30 screw and small clamp.

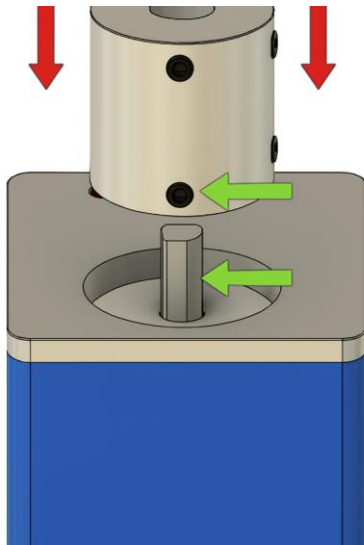
Insert the screw into the opening provided.



Now guide the clamp into the groove provided on the adaptation and push or press it all the way down.



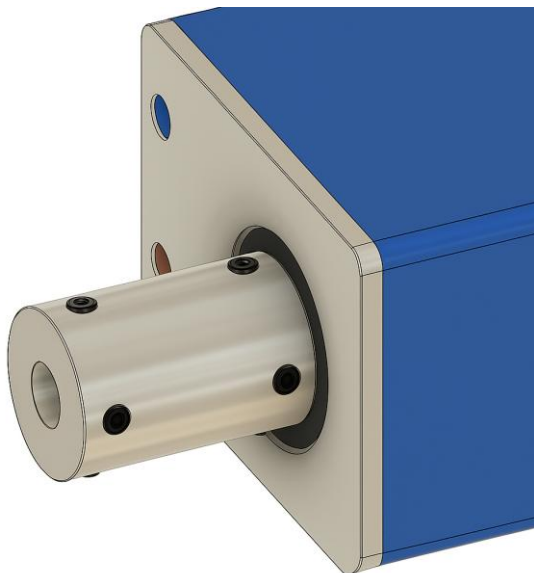
The result should now look as shown in the picture.



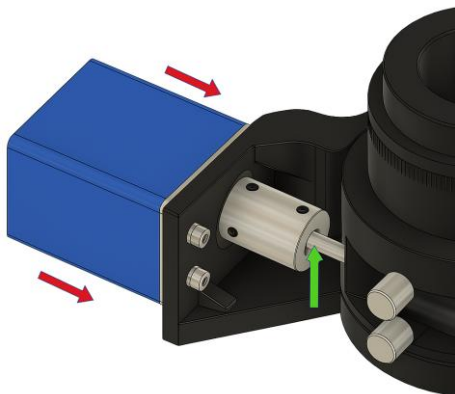
To create an optimum connection between the AAF motor and the flexible coupling, align the adjacent screw with the flattened shaft. (see green arrows)

Now slide the clutch onto the motor shaft and tighten the two lower grub screws.

Make sure that the clutch has 1-2mm space to the engine.

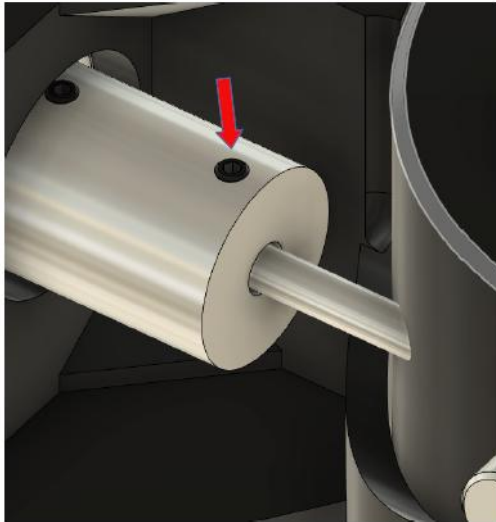


Your result should look like the picture on the left.



Then connect the motor to the coupling using the AAF adaptation. The coupling must be pushed onto the shaft.

Once the the motor has beend adapted tot he shaft, use the two M4x8mm screws supplied with the AAF Motor to screw the motor in place.



In the last step, screw the two grub screws of the coupling to the focuser.

Congratulations, you have successfully installed the adaptation.